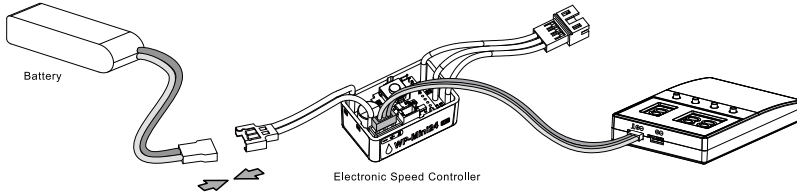


## 4 Programming method

1. The LED program card is used to set the parameters :

Connect the interface marked with "- +r" on the esc to the interface marked with "- + l " on the program card using a separate programming cable(a cable with JR plugs at both ends included in the program box packaging),then connect the esc to the battery and turn it on. Using the "ITEM" and "VALUE" buttons on the program card to quickly select and change the values. Press "OK" to save the parameters.



## 5 Factory reset

Below are several ways to recover factory parameters:

1. The LED program card:

Once the LED program card is connected to the ESC, press the "RESET" key and then press "OK" to save to restore the factory settings.

# 06 Explanation for LED Status

1. During the Start-up Process

- The RED LED turns on solid indicating the ESC doesn't detect any throttle signal or the throttle trigger is at the neutral position.
- The GREEN LED flashes "Number" times indicating the number of LiPo cells you have connected to the ESC.

2. In Operation

- RED & GREEN LEDs die out when the throttle trigger is in throttle neutral zone.
- The RED LED turns on solid when your vehicle runs forward, The GREEN LED comes on when pulling the throttle trigger to the full (100%) throttle endpoint.
- The RED LED turns on solid when you reverse, the GREEN LED will also come on when pushing the throttle trigger to the full reverse endpoint and setting the "maximum brake force" to 100%.

3. When Some Protection is Activated

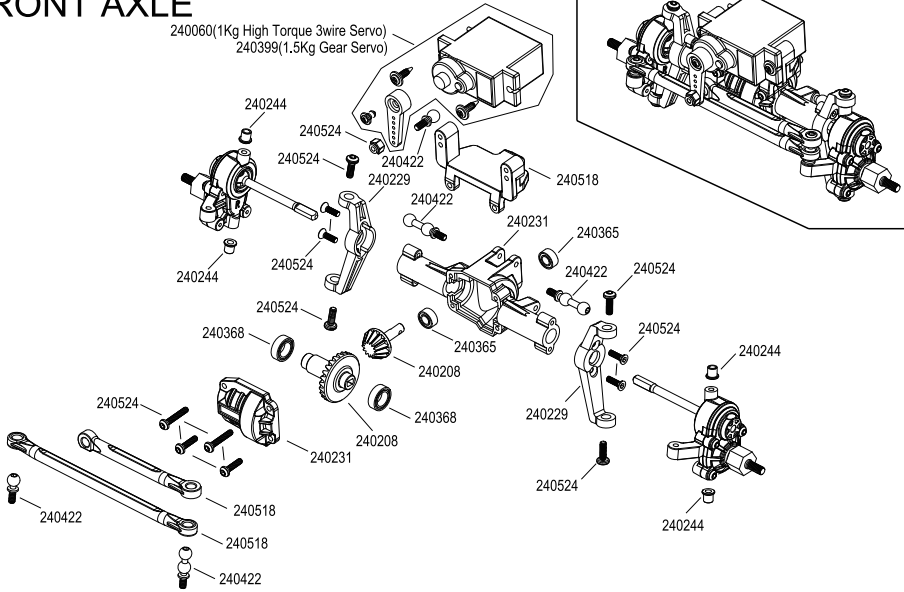
- The RED LED flashes a short, single flash and repeats (☆, ☆) indicating the low voltage cutoff protection is activated.
- The GREEN LED flashes a short, single flash and repeats (✱, ✱) indicating the ESC thermal protection is activated.

# 07 Trouble Shooting

Trouble(s)	Possible Causes	Solution(s)
The light does not turn on after power-up, the motor does not start.	The battery voltage is not output to the ESC	Check the battery, and whether the connection between battery and esc is good and whether the plug is soldered well;
The motor does not start after power-up, with a "beep-beep- beep-beep-" warning tone accompanied by a flashing red light (approximately 1 seconds for each set of two-tone intervals) .	The battery pack voltage is not within the range of support.	Check the battery voltage or change the battery for test.
After power on, the red light flashes quickly.	1. The throttle signal is not detected by the ESC. 2. The neutral point of the ESC is not calibrated correctly.	1. Check if the throttle wire is plugged into the correct channel. Check if your transmitter is turned on. Check if the receiver ok. 2. Recalibrate the throttle travel.
The car is going in the reversed direction when the forward throttle is applied.	The transmission on the car kit is different.	1. For brushless motors, any two of the three wires on the motor can be interchangeable or adjusted through the ESC parameter item "motor rotation direction". 2. For brushed motors, interchange the two wires, or adjust it through the ESC parameter item "motor rotation direction".
The motor suddenly stopped or significantly reduced the output in running.	1. Possible interference; 2. The ESC enters into low-voltage protection state; 3. The ESC enters into overheat protection state.	1. Check the cause of the interference in the receiver and check the battery level of the transmitter. 2. Replace the battery if red light keeps flashing; 3. The green light continues to flash for temperature protection, please continue to use after the ESC or motor temperature is reduced (it is recommended to reduce the load on the vehicle).
The motor stuttered and unable to start.	1. The motor is connected incorrectly; 2. ESC fault (partial power pipe MOSFET burned out). 3. Motor type selection error	1. Check the plugs and the solder points and whether the sequence of A, B and C wires is correct.; 2. Contact the dealer to handle the repair. 3. Adjust the electrical parameters and select the corresponding motor type.
The car ran forward/backward slowly when the throttle trigger was at the neutral position.	1. The neutral position on the transmitter was not stable, so signals were not stable either. 2. The ESC calibration was not proper.	1. Replace your transmitter 2. Re-calibrate the throttle range or fine tune the neutral position on the transmitter.
LED displays three end horizontal lines all the time ——— when connecting LED program card.	The program box is connected incorrectly to the ESC.	Please use the correct interface to connect to the programming box. This ESC has a dedicated programming port to connect to.
The throttle travel setting could not be completed.	The ESC did not receive the correct throttle signal.	1. Check whether the throttle cable is correctly connected to the receiver. 2. If the servo works normally, you can connect the throttle cable of esc to the steering channel to have a test, or change the transmitter/receiver system for test directly.



# FRONT AXLE



# REAR AXLE

